

**— REBATES —**  
Available in MI, OH & IN



# MIRA MEMBER EXCLUSIVE

Members with questions call the MIRA office at 1-800-666-6233

## SERVICE STATION EQUIPMENT REBATE PROGRAM



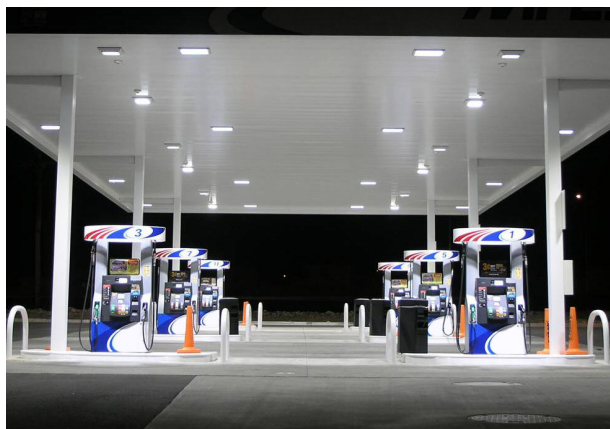
**MIRA members receive a 3% rebate\* on the following:**

1. All service calls
2. Hanging hardware including hoses, nozzles and breakaways\*
3. Hanging hardware kits to convert from Stage II to Stage I\*\*
4. Canopy lights\*\*

**Rebates will be sent quarterly from MIRA.**

\*All invoices must be paid in-full and on-time or you will be disqualified from receiving this rebate

\*\*Applicable tax, installation and shipping additional



MANUFACTURER: IRPCO/GOODYEAR - HOSES		
Part #	Description	Qty of 10 or More
124021	Breakaway Hose, 3/4" x 8", (Male x Male)	\$20.48 Each
123021	Breakaway Hose, 1" x 10", (Male x Male)	\$28.99 Each
125125	Hose, 5/8" x 8'6", (Swivel x Swivel) (Indv. Box)	\$57.25 Each
125175	Hose, 5/8" x 9'6", (Swivel x Swivel)	\$61.47 Each
125302	Hose, 5/8" x 12'0", (Male x Swivel) (Indv. Box)	\$52.54 Each
MANUFACTURER: OPW - NOZZLES		
Part #	Description	Qty of 15 or More
11BP-0400	Nozzle, 11BP (Black)	\$60.64 Each
7HB-0400	Nozzle, 7HB Diesel (Black)	\$117.95 Each
MANUFACTURER: CATLOW - BREAKAWAYS		
Part #	Description	Qty of 10 or More
CTM100	Cam Twist Breakaway, 1"	\$84.00 Each
CTM75	Cam Twist Breakaway, 3/4"	\$57.66 Each
MANUFACTURER: OPW - BREAKAWAYS		
Part #	Description	Qty of 10 or More
66RB-2000	Reconnectable Breakaway, 1"	\$93.04 Each
66REC-1000	Reconnectable Breakaway, 3/4"	\$61.96 Each
MANUFACTURER: HUSKY - BREAKAWAYS		
Part #	Description	Qty of 10 or More
2276	Breakaway, 1" (Reconnect)	\$98.72 Each
3360	Breakaway, 3/4" (Reconnect)	\$68.35 Each
MANUFACTURER: IRPCO/GOODYEAR - LOW PERM HOSE (SETUP)		
Part #	Description	Qty of 10 or More
20755200	3/4" x 8'6" Flexsteel Low Perm Hose	\$87.04 Each
20754757	3/4" x 10" Flexsteel Low Perm Whip Hose	\$39.33 Each
VAR75	Converter, Vacuum-Assist	\$22.58 Each
MANUFACTURER: CREE - CANOPY LIGHTS		
Part #	Description	Each
CPY 250	Canopy Light	\$268.00 Each
MANUFACTURER: LSI - CANOPY LIGHTS		
Part #	Description	Each
CRUS SC LED SS CW UE WHT	Canopy Light	\$289.00 Each

TO SIGN UP FOR THIS PROGRAM, CALL THE MIRA OFFICE AT  
(800) 666-6233 OR EMAIL [INFO@MIRAMW.ORG](mailto:INFO@MIRAMW.ORG).